

Lenovo Branded Windows Server 2025 Client Access Licenses (CALs)

Are you CAL compliant? Let's make sure you are ready to go...



Windows Server 2025 is here! As you update your infrastructure OS, now is a great time to take stock and make sure that you are CAL compliant.

What is CAL compliance?

We're glad you asked. Client Access Licenses (CALs) are an important part of Windows Server licensing. CALs are required for users and/or devices accessing or using a server with a Windows Server operating system. Every user or device that accesses the server needs their own CAL.

Are CALs different from Windows Server OS licenses?

Yes. CALs and Windows Server OS licenses are different, and both are required to compliantly run Windows Server. Good news! Lenovo sells both, and CALs can be purchased at any time to accommodate an organization's changing needs.

How can Lenovo help?

Lenovo makes CALs easy.

We sell our CALs in packs of 1, 5, 10, and 50 so you can buy what you need when you need it. Lenovo CALs even have their own Lenovo part number to make ordering simple.

Are Lenovo CALs portable?

Yes! Lenovo CALs are portable, and they can be used on any server regardless of manufacturer. Our goal is to make CAL compliance as easy and efficient as possible for our customers.

What types of CALs are there?

There are three main types of CALs:

Windows Server 2025 CALs

Required for: Each user and/or device accessing Windows Server 2025 Standard or Datacenter edition.

Windows Server 2025 CALs are now available from Lenovo, so you can easily purchase your software and hardware together. Windows Server 2025 CALs are also backwards-compatible for previous Windows versions.

Remote Desktop Services (RDS) CALs

Required for: Remote Desktop access for users and/or devices (in addition to Windows Server 2025 CALs)

Add these for users and/or devices that need remote access.

SQL Server CALs

Required for: SQL Server access for users and/or devices (in addition to Windows Server 2025 CALs)

If you or your team use SQL Server, make sure to get SQL Server CALs for each user and/or device that needs access.

Lenovo

What's the difference between a User and Device CAL?

User and Device CALs give you the flexibility to license your software efficiently, depending on your organization type. Depending on your organization's layout, one will likely be more cost-effective than the other.

User CALs are a license for each user who accesses a server, regardless of how many devices they use. In contrast, Device CALs are a license for each device that accesses the server, regardless of how many users use that device.

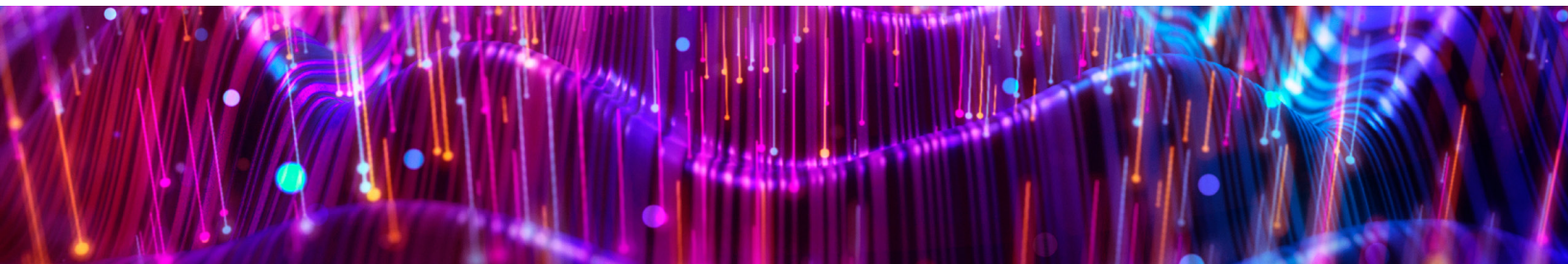
For example, if you have 100 employees who all access Windows Server through 10 shared devices, you have two different licensing options. You could purchase 100 User CALs (one for each user) or 10 Device CALs (one for each device). In this scenario, it would likely be more efficient to choose Device CALs.

However, if you have 10 employees who work across 20+ devices across a variety of locations, it would likely be more efficient to choose User CALs.

How to Choose CALs

1. Which Edition are you purchasing?	Datacenter and Standard editions require CALs	Essentials edition*: No CALs required. RDS not supported.
2. Do your employees use several different devices, or share a single device?	If you have single users with multiple devices, user CALs are the most cost-effective option.	How many users will be accessing the server? ► This is how many user CALs you need _____**
	If you have single devices with multiple users, device CALs are the most cost-effective option.	How many devices will be accessing the server? ► This is how many device CALs you need _____**
3. Do you have users or devices that could benefit from remote access?	Remote Desktop Services CALs need to be coupled with Windows Server user or device CALs.	This is how many RDS user CALs you need _____ This is how many RDS device CALs you need _____
4. Do you have any users or devices accessing SQL Server?	This is how many SQL Server User CALs you need _____ This is how many SQL Server Device CALs you need _____	

* No CALs for Essentials but you have the right to have 25 users or 50 devices.



Want an easier way? Use our handy licensing calculator.

Quick CAL Tips



When can I purchase CALs?

Anytime. CALs can be bought by users who already own or are currently buying a Windows Server license. Additional CALs can be purchased after the initial server purchase.



Do my CALs and servers need to be from the same manufacturer?

No. Any CAL type (Lenovo, VL, or retail) can be used to access any brand of server with a Windows Server operating system.



Are CALs included with Windows Server 2025?

No. CALs are not included with Windows Server 2025, giving you flexibility to buy them as you need them.



When do I need CALs?

You need CALs whenever users or devices access or use your server.

CAL Part Numbers

Part Number	CAL Type
7S1S003BWW	Windows Server 2025 CAL (1 User)
7S1S003PWW	Windows Server 2025 CAL (5 User)
7S1S003WWW	Windows Server 2025 CAL (10 User)
7S1S003YWW	Windows Server 2025 CAL (50 User)
7S1S0035WW	Windows Server 2025 CAL (1 Device)
7S1S003HWW	Windows Server 2025 CAL (5 Device)
7S1S003VWW	Windows Server 2025 CAL (10 Device)
7S1S003XWW	Windows Server 2025 CAL (50 Device)
7S1S0045WW	Windows Server 2025 Remote Desktop Services CAL (1 User)
7S1S004HWW	Windows Server 2025 Remote Desktop Services CAL (5 User)
7S1S004QWW	Windows Server 2025 Remote Desktop Services CAL (10 User)
7S1S004SWW	Windows Server 2025 Remote Desktop Services CAL (50 User)
7S1S003ZWW	Windows Server 2025 Remote Desktop Services CAL (1 Device)
7S1S004BWW	Windows Server 2025 Remote Desktop Services CAL (5 Device)
7S1S004PWW	Windows Server 2025 Remote Desktop Services CAL (10 Device)
7S1S004RWW	Windows Server 2025 Remote Desktop Services CAL (50 Device)

Lenovo

Windows Server 2025
Optimize for innovation anywhere



Lenovo and the Lenovo logo are trademarks or registered trademarks of Lenovo in the United States, other countries, or both. A current list of Lenovo trademarks is available on the Web at <https://www.lenovo.com/us/en/legal/copytrade/>.

The following terms are trademarks of Lenovo in the United States, other countries, or both: Lenovo® ThinkAgile®

The following terms are trademarks of other companies: AMD and AMD EPYC™ are trademarks of Advanced Micro Devices, Inc. Intel® and Xeon® are trademarks of Intel Corporation or its subsidiaries. Microsoft®, Arc®, and Azure® are trademarks of Microsoft Corporation in the United States, other countries, or both. Other company, product, or service names may be trademarks or service marks of others.